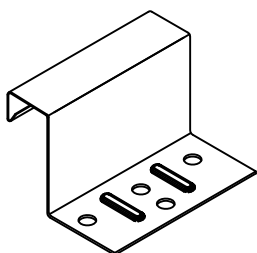


(#SL2CLP2.5)  
(#SL2CLP3)

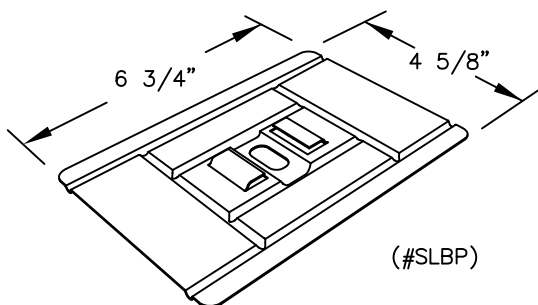
### STANDARD CLIP

- RAISES PANEL 1/2" OR 1" ABOVE SUPPORTS
- USE WHEN INSTALLING PANELS OVER FIBERGLASS INSULATION, WITH OR WITHOUT THERMAL BLOCKS
- FLOATING CLIP ALLOWS FOR THERMAL MOVEMENT
- 2 1/2" CLIP COMPRESSES A MAXIMUM 3" FIBERGLASS INSULATION.
- 3" CLIP COMPRESSES A MAXIMUM 3" FIBERGLASS INSULATION PLUS 1/2" THERMAL BLOCK
- 3" CLIP COMPRESSES A MAXIMUM 6" FIBERGLASS INSULATION WITHOUT THERMAL BLOCK



(#SLCLP2.5FX)  
(#SLCLP3FX)

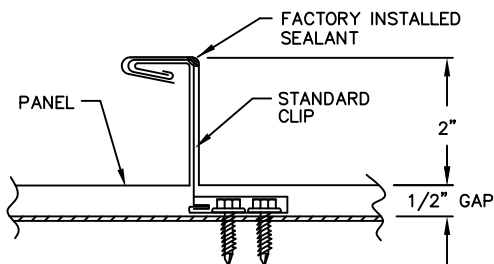
### LOW PROFILE FIXED CLIP



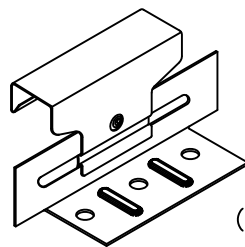
(#SLBP)

### BEARING PLATE FOR STD. CLIP

- FOR INSTALLING PANELS OVER RIGID INSULATION



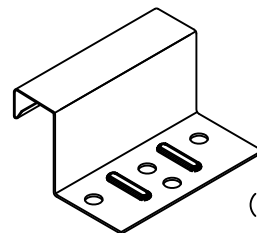
### SEAMED STD. CLIP



(#SL2CLP2LOW)

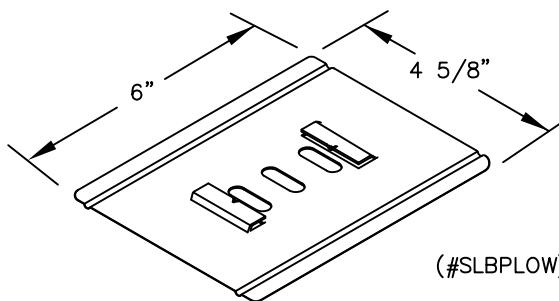
### LOW PROFILE CLIP

- HOLDS PANEL CLOSE TO SUBSTRATE
- FOR USE OVER WOOD DECK, RIGID INSULATION WITH BEARING PLATE) OR OPEN FRAMING WITHOUT INSULATION.
- MINIMAL 3/16" GAP PROVIDES JUST ENOUGH FASTENER CLEARANCE.



(#SLCLP2FX)

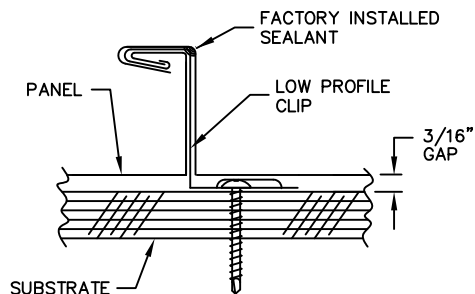
### LOW PROFILE FIXED CLIP



(#SLBPLOW)

### BEARING PLATE FOR LOW CLIP

- FOR INSTALLING PANELS OVER RIGID INSULATION



### SEAMED LOW CLIP



**SPAN-LOK**

**CLIP INFORMATION**

**SL-02**